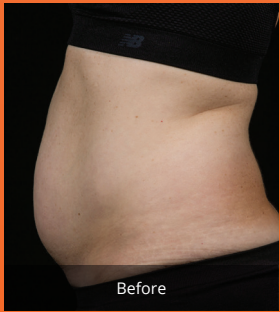
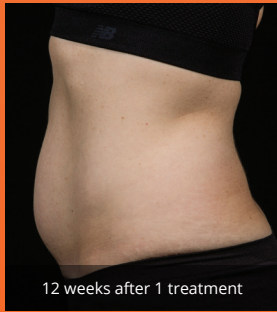


Flanks and Abdomen



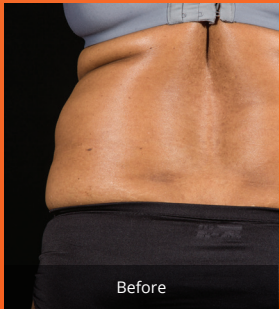
Before



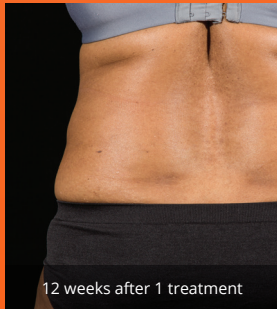
12 weeks after 1 treatment

Courtesy of L. Bass, MD

Love Handles



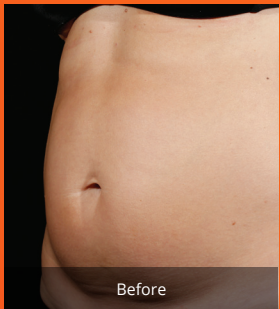
Before



12 weeks after 1 treatment

Courtesy of B. Katz, MD

Core



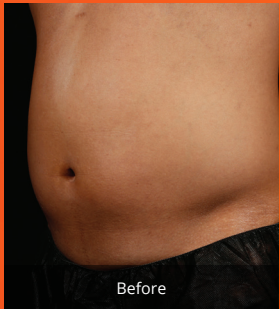
Before



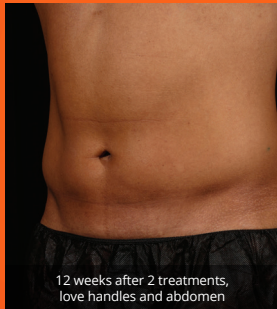
12 weeks after 2 treatments,
love handles and abdomen

Courtesy of S. Doherty, MD

Core



Before



12 weeks after 2 treatments,
love handles and abdomen

Courtesy of S. Doherty, MD

Ask your provider if
SculpSure may be right for
you. To learn more, visit

www.sculpsure.com

Non-Invasive
Body Contouring In
25 Minutes

Individual results may vary and are not guaranteed. SculpSure is intended for non-invasive fat reduction for the flanks and abdomen. SculpSure is not a weight loss solution for people who are obese.

¹ Katz B, Doherty S. A multicenter study of the safety and efficacy of a non-invasive 1060 nm diode laser for fat reduction of the flanks. Paper presented at: 2015 Annual American Society for Laser Medicine and Surgery Conference; April 22-26; Kissimmee, FL.

² Average patient discomfort rating of 3.7 on a scale of 1-10; Bass L, Doherty S. Non-invasive fat reduction of the abdomen with a 1060nm diode laser. Paper presented at: 2015 Annual American Society for Laser Medicine and Surgery Conference; April 22-26; Kissimmee, FL.

CYNOSURE

2016 Cynosure, Inc. Cynosure owns exclusive rights to photography. Use of photography without written permission of Cynosure is prohibited. SculpSure and Cynosure are registered trademarks of Cynosure, Inc. 921-7026-005 Rev. 2

SculpSure[®]

Redefine your shape in just 25 minutes

SculpSure is a breakthrough in light-based body contouring designed to reduce stubborn fat in problem areas such as the abdomen and love handles without surgery or downtime.

IS SCULPSURE RIGHT FOR ME?

SculpSure is ideal for people with trouble spots, particularly those areas that seem resistant to diet and exercise.

HOW MANY TREATMENTS WILL I NEED?

Every patient is different. Your treatment provider will develop a customized treatment plan to meet your desired goals. Ask your provider about the treatment plan that is right for you.



HOW LONG BEFORE I CAN RESUME NORMAL ACTIVITIES?

There is no downtime with SculpSure, so you can have the treatment during your lunch hour and return to work immediately.

WHAT SHOULD I EXPECT DURING THE TREATMENT?

Most patients feel a deep warmth and tingling sensation intermittently throughout the treatment which is generally well-tolerated.²

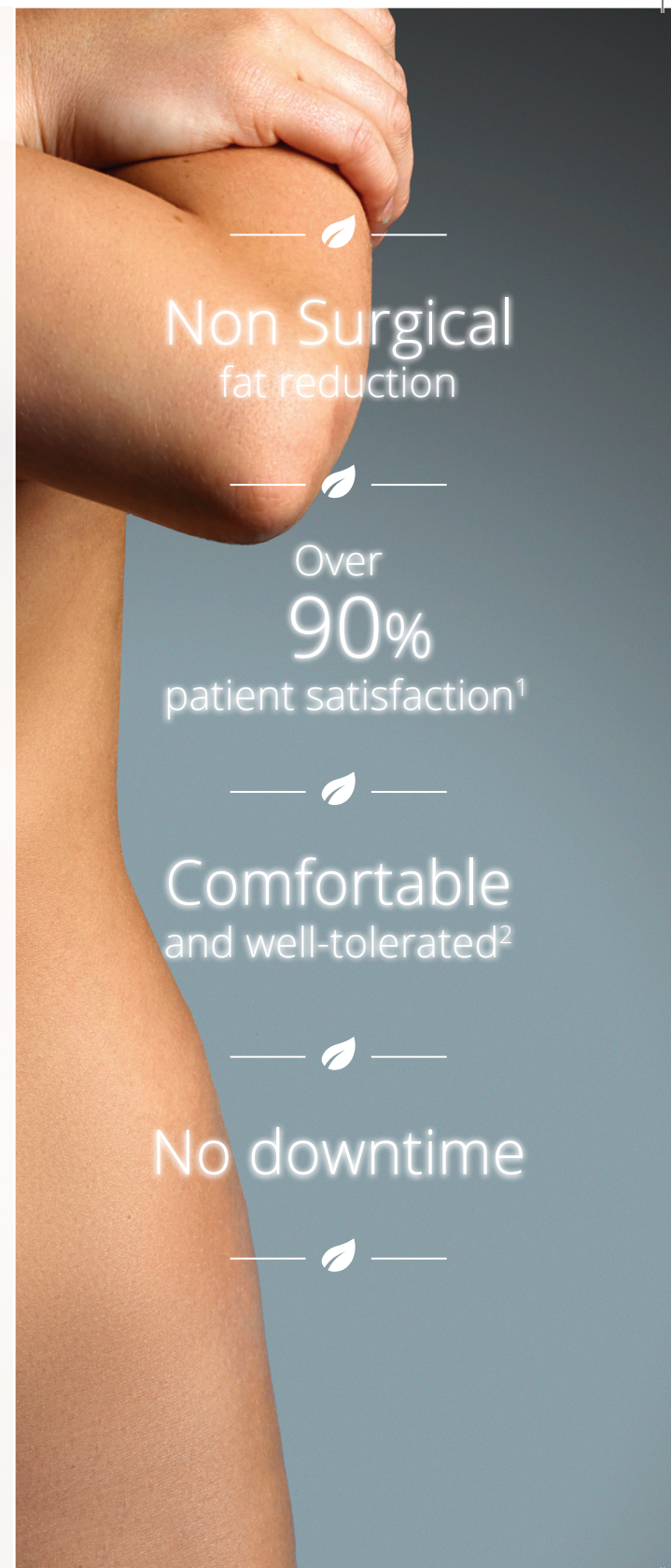
WHEN WILL I SEE RESULTS?

Patients may start to see results as early as 6 weeks following treatment as the body begins to evacuate the destroyed fat cells, with optimal results typically seen at 12 weeks.

HOW LONG WILL RESULTS LAST?

Treated fat cells are permanently eliminated and will not regenerate.

Get rid of stubborn fat you can't lose with diet and exercise alone.



Non Surgical
fat reduction

Over
90%
patient satisfaction¹

Comfortable
and well-tolerated²

No downtime